

K-TEK NANOTECHNOLOGY LLC.

9755 SW Commerce Circle, Suite B1
Wilsonville, OR 97070 USA

SPM Accessories - Cantilevers, Calibration Gratings,
Test samples, HOPG, SNOM Probes etc.

Sales Contact : Sonia Lalev

E-mail : sales@ktekintl.com

Tel : 503 - 783 - 1622

Fax : 503 - 624 - 0735, 503 - 598 - 9721

Toll Free : 1- 800- 880- 0172

Authorized Distributor of Loyalite

www.kteknano.com

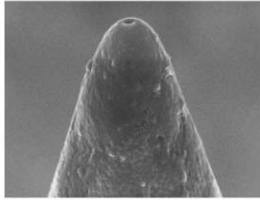


**SNOM PROBES FOR
NEAR FIELD MICROSCOPY
AND
PHOTONICS**

Loyalite®
.....

K-TEK NANOTECHNOLOGY LLC.
Toll Free :1-800-880-0172

New Product Family P200 with improved performances:



- Very High Light Transmission
- 50nm light proof Aluminium coating
- Focussed Ion Beam 50nm Aperture for higher precision
- Each tip provided with individual MEB pictures
- Shear force adapted ($35 \pm 5 \mu\text{m}$ length)
- Ready for tuning force (10mm jacket Stripping)

A variety of applications from 3stock fibres

■ SMF28e

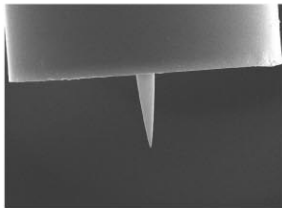
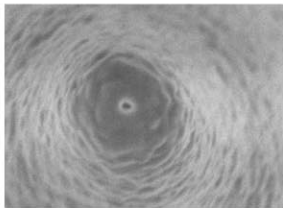
Core diameter $9,2 \mu\text{m}$
 NA : 0,14
 Cladding $125 \mu\text{m}$
 $250 \mu\text{m}$ acrylic jacket For infrared applications, Single mode at telecommunication wavelength (1300, 1550nm), Multiple mode in the visible (can be used in collection mode)

■ MONO450

Core diameter $3,4 \mu\text{m}$
 NA : 0,12
 Cladding $125 \mu\text{m}$
 $250 \mu\text{m}$ acrylic jacket For visible applications, single mode in the visible range

■ SILICA10

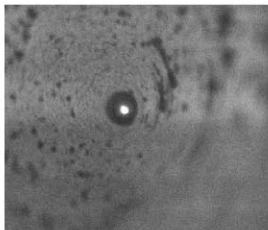
Core diameter $10 \mu\text{m}$
 NA : 0,125
 Cladding $125 \mu\text{m}$
 $145 \mu\text{m}$ Polyimide jacket For demanding UV/visible application; pure silica core for application requiring low level of fibre fluorescence (Spectroscopy, RAMAN, etc) Multiple mode fibre with high collection results.



P200, 1meter probes with 50nm aperture, delivered in box of 10 with individual pictures:

• 10-P200-SMF28-AL50-50 • 10-P200-MONO450-AL50-50 • 10-P200-SILICA10-AL50-50

As usual pulled fibres 50nm APEX radius, 1meter probes with 50nm aperture, delivered in box of 10:



• 10-E50-SMF28-AL50-50 • 10-E50-MONO450-AL50-50
 • 10-E50-SILICA10-AL50-50
 High resolution AFM Topology combined with SNOM features
 All our tips are individually light leakage proved @ $400 \mu\text{m}$, 532nm

A large range of other fibres or apertures available on request : contact us

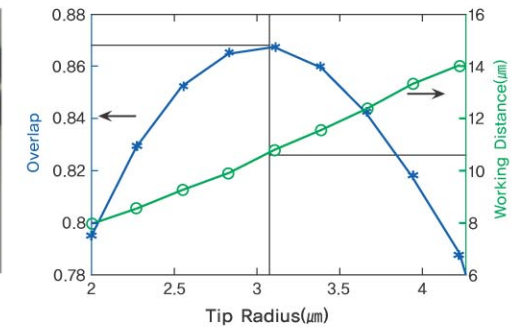
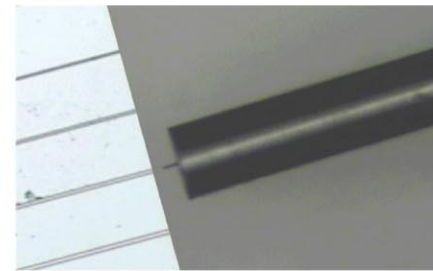
18 rue Alain Savary, Besancon, France Tel : +333 81 53 26 25
 info@lovalite.com Fax : +333 81 25 53 51

New Taper Polymer Microlens for smaller mode sizes:

- Very High Coupling efficiency
- Suitable for small waveguide sizes
- Unique manufacturing process allowing self alignment on fibre core
- Radius of curvature can be customized to obtain mode size required

■ Three items from stock:

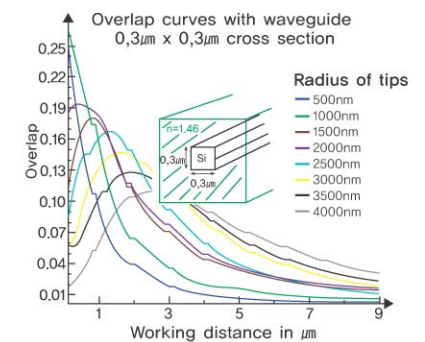
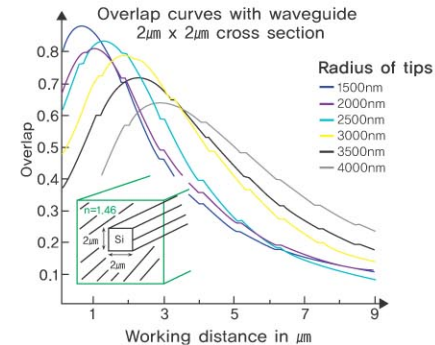
Reference	Radius of curvature	Tip length	Fiber length
10-P1000-SMF28	1000nm	$35 \pm 5 \mu\text{m}$	2m
10-P2000-SMF28	2000nm	$35 \pm 5 \mu\text{m}$	2m
10-P3000-SMF28	3000nm	$35 \pm 5 \mu\text{m}$	2m



■ SMF28e

Core diameter $9,2 \mu\text{m}$ NA: 0,14
 Cladding diameter $125 \mu\text{m}$ $250 \mu\text{m}$ acrylic jacket

- For infrared applications, Single mode at telecommunication wavelength (1300, 1550nm)
- Panda Polarisation maintaining fibre available on request
- Connectorisation on request (SMA, FC/PC...)



Pick up the right radius of curvature for customized tips matching your mode size requirements.